



Block Name: Waterwheel

Skill level: Easy (3" block more challenging)

Cutting method: rotary cutting

Fabrics: 3 colors
or 3 shades of
one color - light,
medium & dark

Cutting: use the
chart below for the
size block you need.



This is a traditional block design and may be used by anyone. The instructions, however, are copyrighted and may not be reproduced without permission.

Quantity to cut	3" block	6" block	9" block	12" block	15" block
Light color:					
8	1" x 1"	1.5" x 1.5"	2" x 2"	2.5" x 2.5"	3" x 3"
2	2" x 2"	3" x 3"	4" x 4"	5" x 5"	6" x 6"
Medium:					
2	2" x 2"	3" x 3"	4" x 4"	5" x 5"	6" x 6"
1	1.5" x 1.5"	2.5" x 2.5"	3.5" x 3.5"	4.5" x 4.5"	5.5" x 5.5"
Dark:					
8	1" x 1"	1.5" x 1.5"	2" x 2"	2.5" x 2.5"	3" x 3"

Block size refers to finished size.

Constructing the Block

This block uses four half-square triangle (HSTs) units and four 4-patch units.

Let's begin by making these units.



Making the 4-Patch Units

1. Use the smallest light and dark squares. Sew a light square to a dark square. Press seam toward the dark square. Make 8.

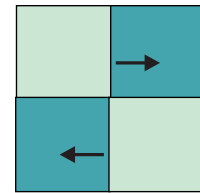
Copyright 2010 Sandy Harris. All Rights reserved. Patterns may be photocopied for personal use only. Sundrop Designs, PO Box 322, Cottage Grove, OR 97424. Website: www.sundropdesigns.com, e-mail: sundropdesigns@yahoo.com.



Block Name: Waterwheel, page 2

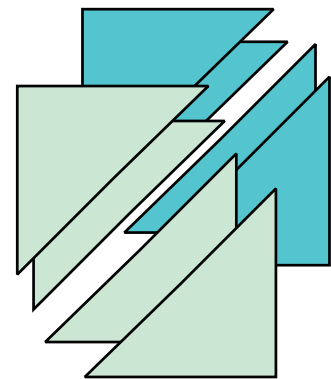
Making 4-Patch Units continued

2. Place two of the units from the previous step right sides together with seams going in opposite directions and snugged up against each other. Sew together. Press seam one way or the other. Make 4.

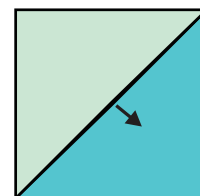


Making the Half-Square Triangle (HST) Units

1. Cut the largest light and medium color squares in half diagonally once.



2. Place one triangle of each color right sides together and sew on the long side - this is the bias or stretchy side so handle carefully. Repeat with remaining triangles to make a total of 4 HST units. Press seams toward the darker color triangle. Make 4.

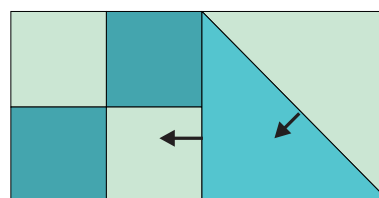


Make 4.

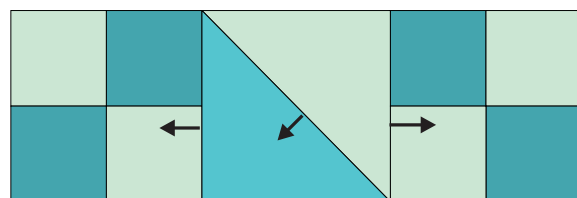
3. Trim units to same size as the remaining medium color square.

Making the Top and Bottom Rows

1. Sew a 4-patch unit to a HST unit as shown. Press seam toward the 4-patch unit.



2. Sew another 4-patch unit to the opposite side of the HST unit as shown. Press seam toward the 4-patch unit. Make 2.



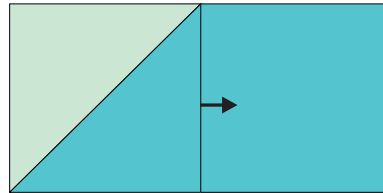
Make 2.



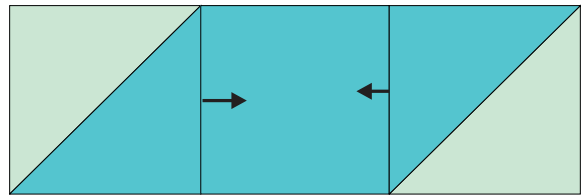
Block Name: Waterwheel, page 3

Making the Center Row

1. Sew the medium color square to a HST unit. Press seam toward the square.



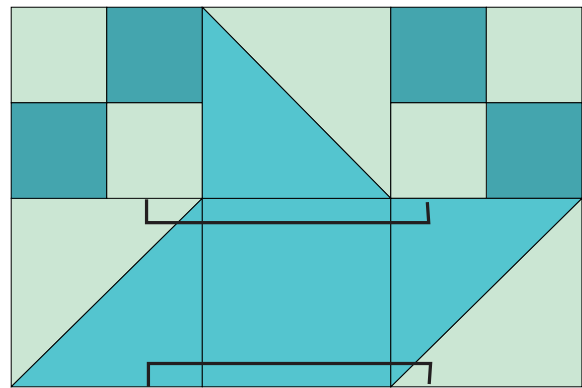
2. Sew remaining HST unit to opposite side of the medium color square. Press seam toward the square.



Make 1.

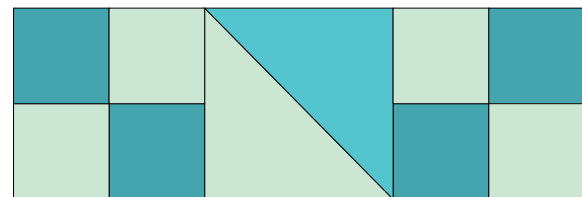
Assembling the Block

1. On a flat surface, lay out the units as they should go in the finished block.



2. Sew the top row to the center row. Press seam toward the center row.

3. Sew bottom row to center row. Press seam toward the center row.



4. Press entire block. Measure and square it up if needed.



Block Name: Waterwheel, page 4



Set without sashing.



Set with sashing and cornerstones.